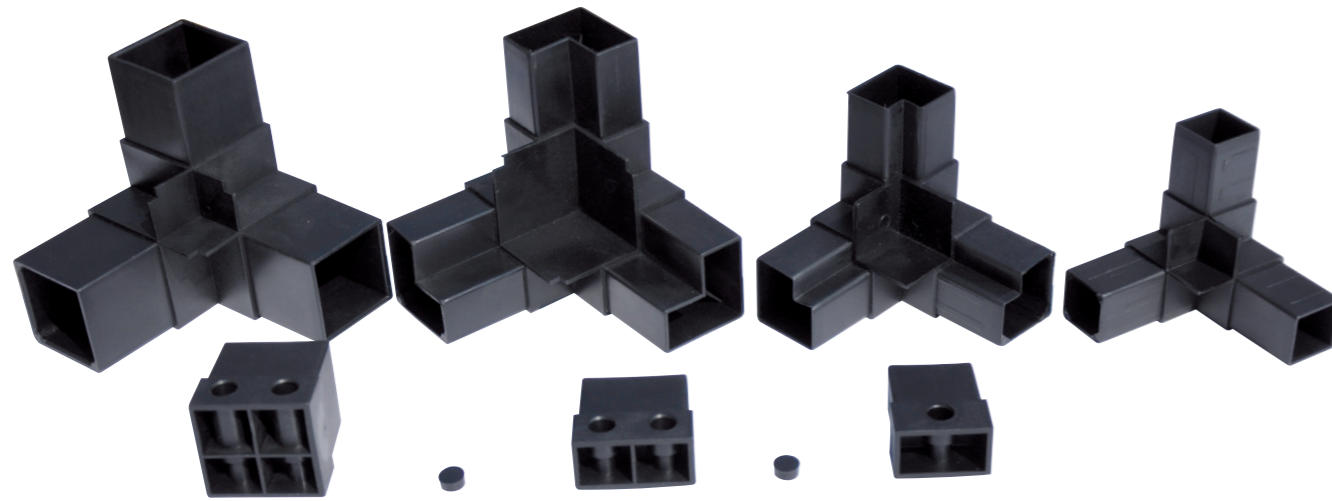


ANGOLI e GIUNTI OMEGA per TELAI UTA - Profilo Semplice CORNERS & OMEGA JOINTS for AHU's FRAMES - Simple Profile



La serie di angolari e giunti omega in plastica per i profili ad aletta semplice rappresenta uno dei metodi più diffusi per la costruzione di telai in alluminio per centrali di trattamento dell'aria. Enginia ha sviluppato negli anni questa completa linea di misure, che accoglie pannelli da 25 e 45 mm e può essere utilizzata per la fabbricazione di estrattori d'aria e UTA di ogni dimensione. La tenuta dell'aria è normalmente ottenuta tramite guarnizioni espanse a celle chiuse autoadesive, poste sull'aletta dei profili.

The plastic series of corners and omega joints for simple wing profiles is one of the most popular methods for the construction of aluminum frames for air handling units. Enginia developed over the years this complete line of sizes, accommodating from 25mm to 45mm panels that can be used for the manufacture of extractor fans and AHU of all sizes. The airtight seal is normally achieved through closed-cell foam adhesive gasket, placed on fin of the profiles.

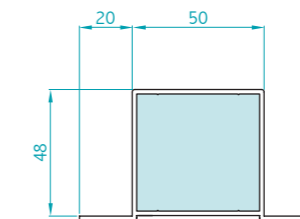
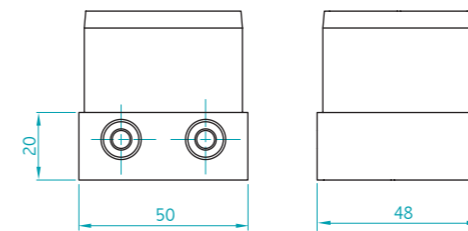
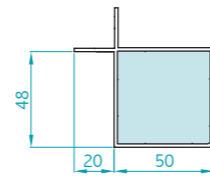
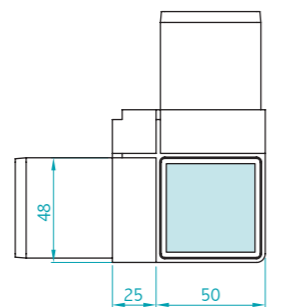
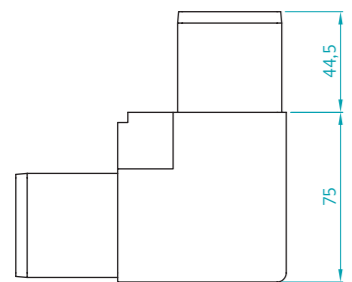
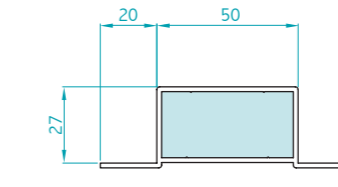
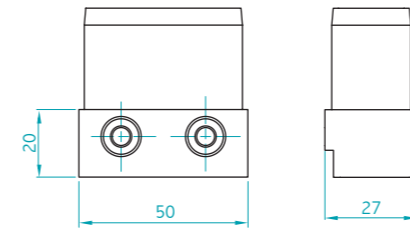
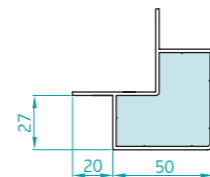
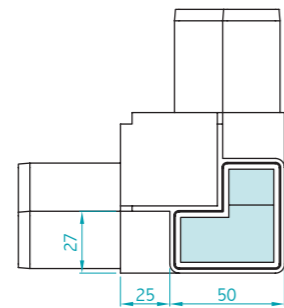
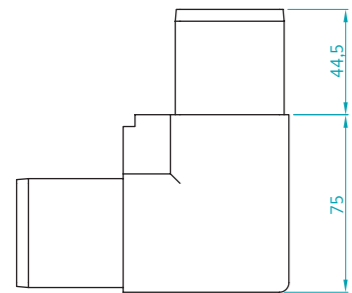
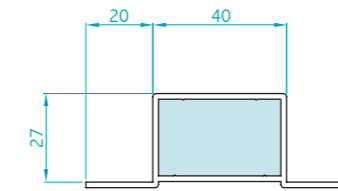
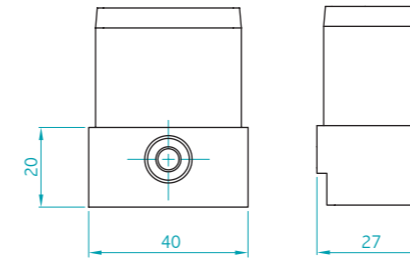
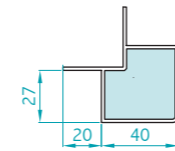
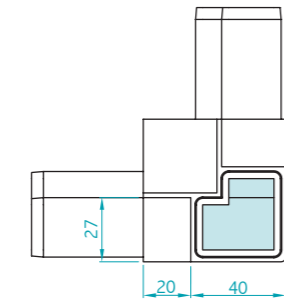
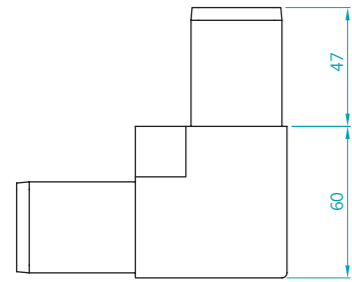
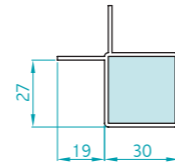
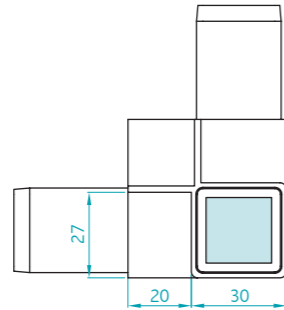
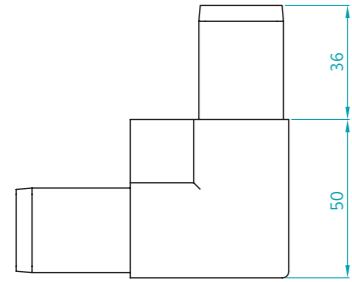


Enginia Srl

Viale Lombardia, 78 - 20056 Trezzo sull'Adda (MI) - Italy
tel. +39 02.95749357 - fax +39 02.95749365
commerciale@enginiasrl.com - www.enginiasrl.com

ANGOLI e GIUNTI OMEGA per TELAI UTA - Profilo Semplice

CORNERS & OMEGA JOINTS for AHU's FRAMES - Simple Profile



Codice/Code	AFG330-250	
Materiale/ Material	Nylon+ Fibra di vetro / Nylon + Fiberglass	
Tipo/Type	PA6 FV20%	
Pcs/Box	250	

Codice/Code	AFG430-250	GFG240-250
Materiale/ Material	Nylon+ Fibra di vetro / Nylon + Fiberglass	
Tipo/Type	PA6 FV20%	PA6 FV30%
Pcs/Box	125	100

Codice/Code	AFG530-250	GFG250-250
Materiale/ Material	Nylon+ Fibra di vetro / Nylon + Fiberglass	
Tipo/Type	PA6 FV20%	PA6 FV30%
Pcs/Box	70	100

Codice/Code	AFG530-450	GFG250-450
Materiale/ Material	Nylon+ Fibra di vetro / Nylon + Fiberglass	
Tipo/Type	PA6 FV20%	PA6 FV30%
Pcs/Box	60	100